



JIM DINE

DOG ON THE FORGE

20.04-21.07

kunsthau göttingen

La Biennale di Venezia

60. Esposizione
Internazionale
d'Arte

Eventi Collaterali

SUPPORTED BY
TEMPLON
II

JIM DINE

**AMERICAN ARTIST JIM DINE TO SHOW NEW WORK IN A COLLATERAL EVENT OF THE 60TH INTERNATIONAL ART EXHIBITION
LA BIENNALE DI VENEZIA AT THE PALAZZO ROCCA. A MAJOR EXHIBITION OF 20 BRONZE SCULPTURES, 7 PAINTINGS AND 5
DRAWINGS MADE SPECIFICALLY FOR VENICE.**

On the occasion of the 60th International Art Exhibition – La Biennale di Venezia, this April, Jim Dine, American painter, sculptor, and poet, is set to take over the Palazzo Rocca Contarini Corfù with an ambitious survey exhibition curated by Gerhard Steidl, Founding Director of Kunsthau Göttingen. Jim Dine - Dog on the Forge is a Collateral Event of the 60th International Art Exhibition – La Biennale di Venezia, Stranieri Ovunque – Foreigners Everywhere, curated by Adriano Pedrosa. Jim Dine's show will open to the public on Saturday, 20 April 2024 and will run through 21 July, 2024.

Jim Dine - Dog on the Forge presents around 50 works from the artist. Paintings, drawings, bronze and wood sculptures, as well as an impressive outdoor installation of large-scale bronze sculptures. The exhibition debuts monumental and site-specific works conceived specifically for the Biennale Arte 2024. Never-before-exhibited paintings and sculptures will be arranged in dialogue with each other and with artworks spanning from the '80s through today. Curator Gerhard Steidl drew inspiration from Dine's relentless odysseys between the United States and Europe, as well as his lifetime dedication to the concept of visual, cultural, and linguistic hybridization. "My whole life, I've been in motion. I find it difficult to sit still. It's a hyperactive quality, I would say. I've always enjoyed going from studio to studio, country to country. For me, traveling is like using red. It's another thing to make the picture.

Installed in a 14th-century palazzo on the Grand Canal, here the ancient meets contemporary in a palatial, Venetian context, casting a reflective light on Jim Dine's personal history and perspective. Reinterpreting his now classical language of tools, hearts, self-portraits, Venuses and Pinocchios (which will have a dedicated room in the exhibition), the show will take over the two floors of the palazzo overlooking the Grand Canal as well as its 18th-century sculpture garden. When asked about the new paintings, Dine remarks, "I'm not interested in making them pretty. I'm interested in carving out images that will move you." Conceived as a poetic journey, the exhibition outlines the complexity of an intimate oeuvre deeply rooted in his knowledge of European art history, and a relentless exploration of language and self.

The corresponding catalogue, "Dog on the Forge", is published by Editions Steidl with poems by Jim Dine. This exhibition is organized by the Kunsthau Göttingen and supported by TEMPLON.











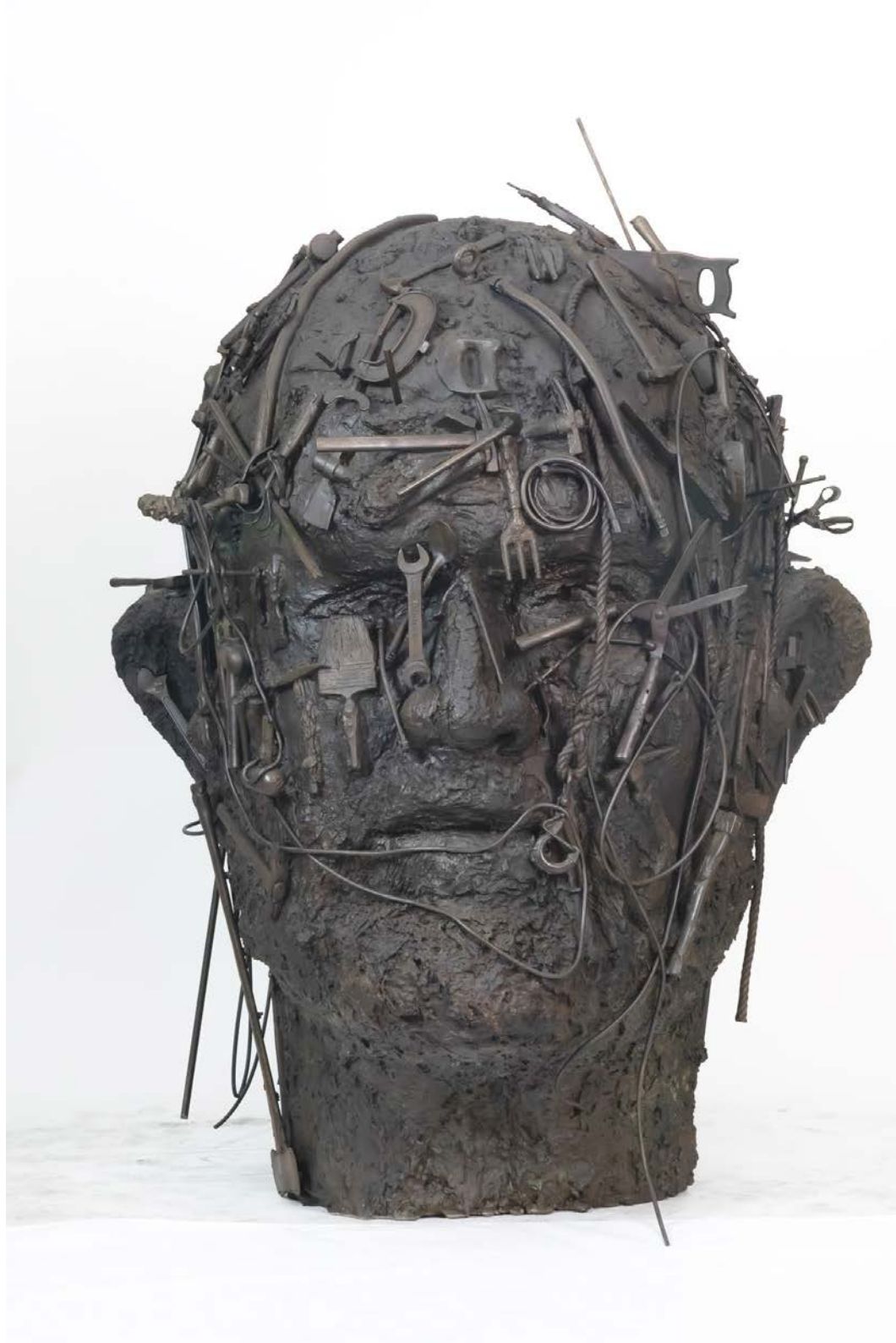




DADDY, FORGET THE ROAD
LEFT BEHIND
MY MIND, AN HISTORICAL TUNE/
RAGE, SHOT THRU THE PUNGENT AIR
MAKES IT UNDRINTABLE, LIKE A DOG-
THE SLEEPER WILL ALWAYS DREAM AND HOWL
ABOUT DEMOCRACY - A HOLIDAY SLEEPER
THE DOG ON THE FORGE
POISONED BY THE DARK AMBER INTERNET,
PHOTOS ON THURSDAY NEXT TUESDAY, WE WASH THE SHEETS.
COFFEE, DOZEN EGGS, ORANGES, ETCETERA. GREEK YOGURT, BACON,
HAM, WATER AND ICE CREAM BARS.

Dog on the Forge, 2024
Charcoal, ink and collage on cardstock
119 x 159 cm
46 3/4 x 62 1/2 in.

My Puzzled Mind, 2018
Bronze
231 x 175 x 180 cm
91 x 69 x 71 in.
Edition of 3 + 1 A.P.





Big Lady On The Beaver's Stump, 2022

Patined bronze

289 × 101 × 122 cm

113 4/5 × 39 3/4 × 48 in.

Edition of 3



Flowers, 2022
Patined bronze
215 x 130 cm
84 5/8 x 51 1/6 in.
Edition of 3





Bird, Me and Tool, 2024
Bronze
250 x 144 x 125 cm
98 1/2 x 57 x 49 1/4 in.
Edition of 3

Black Wax (bolt Cutters), 2023
Bronze
400 × 162 × 370 cm
157 1/2 × 114 1/4 × 25 1/4 in.
Edition of 3





The Lady Flies, 2018
Bronze with polychrome patina
152 x 152 x 97 cm
59 3/4 x 59 3/4 x 38 1/4 in.
Edition of 6

Column With Rock And Axe, 1983
Cast bronze with patina
355,5 × 79 × 49 cm
140 × 31 × 19 1/4 in.
Unique A.P.





Dog On The Forge, 2023

Bronze

254 x 129,5 cm — 100 x 51 in. (base)

180,5 x 406,5 x 150 cm — 71 x 160 x 59 in. (in total)

Edition of 3



Venus and Neptune, 2023
Bronze
202 × 185 × 104 cm
80 × 73 × 41 in.
Edition of 3 + 1 A.P.



Roma-Holy Infant, 2023

Oil, acrylic and objects on wood panel, triptych
152,5 x 152,5 x 23 cm — 60 x 60 x 9 in. (each panel)
152,5 x 457 x 23 cm — 60 x 180 x 9 in. (in total)



Drawing From The Chiesa Dei Ss. Luca E Martina, Roman Forum I, 2018-2019
Charcoal on paper
150 x 101 cm — 59 x 39 3/4 in. (unframed)
166,5 x 116 cm — 65,5 x 42 in. (framed)



Drawing From The Chiesa Dei Ss. Luca E Martina, Roman Forum II, 2018-2019

Charcoal on paper

94 x 124 cm — 37 x 48 3/4 in. (unframed)

120,5 x 169 cm — 47 x 66,5 in. (framed)



Drawing From The Chiesa Dei Ss. Luca E Martina, Roman Forum III, 2018-2019

Charcoal on paper

132 x 105 cm — 52 x 41 1/4 in. (unframed)

140 x 110,5 cm — 55 x 43,5 in. (framed)



Drawing From The Chiesa Dei Ss. Luca E Martina, Roman Forum IV, 2018-2019

Charcoal on paper

112 x 123 cm — 44 x 48 1/2 in. (unframed)

128 x 138,5 cm — 50 x 54,5 in. (framed)

Red Gloves, Yellow Shirt, 2013
Oil enamel and stain on wood
170 × 66 × 89 cm
67 × 26 × 35 in.
Unique



White Gloves, 4 Wheels, 2007
Oil based enamel and charcoal on wood
207 x 148 x 61 cm
81 1/2 x 58 1/4 x 24 in.
Unique





Liar (2nd version), 2007
Enamel and charcoal on wood
180 x 132 x 56 cm
70 7/8 x 51 1 x 22 in.
Unique



Pinocchio at Night, 2004
Enamel on wood
237,5 × 152 × 99 cm
93 1/2 × 59 3/4 × 39 in.
Unique



Pinocchio (blind Boy), 2004
Enamel on wood
262 x 171 x 80 cm
103 1/4 x 67 1/4 x 31 1/2 in.
Unique

The Field of The Cloth of Gold, 1987
Painted wood
195,5 x 71 x 74 cm
77 x 28 x 29 1/4 in.
Unique
Indoors only





Noche Noche, 2003
Cast bronze
114,5 × 244 × 53,5 cm
45 × 96 × 21 in.
Unique



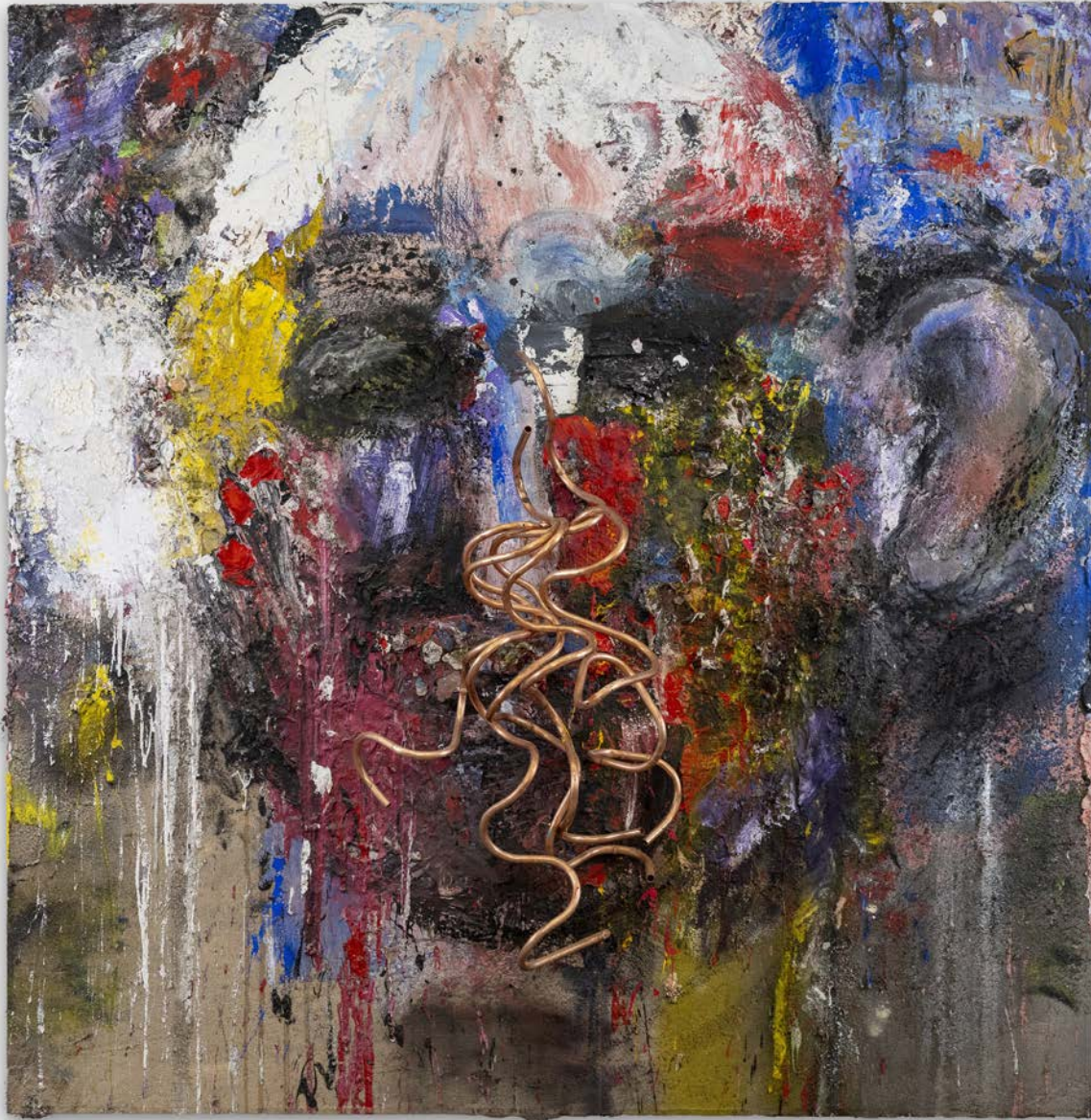
A Beautiful Day (with Cats) Two Hammers (Creeley), 2023

Bronze

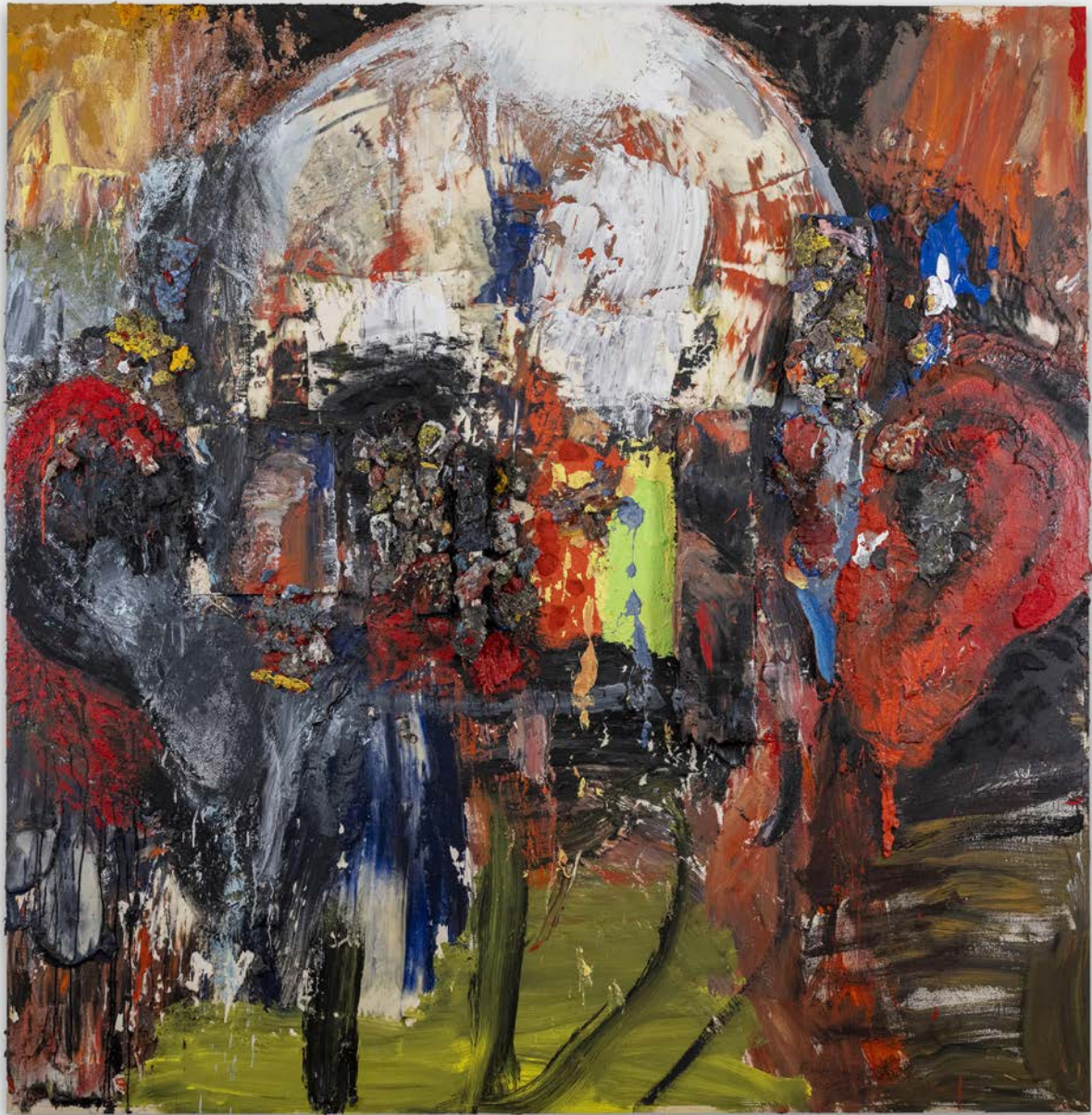
100,5 x 560 x 204 cm

39 1/2 x 220 1/2 x 80 1/4 in.

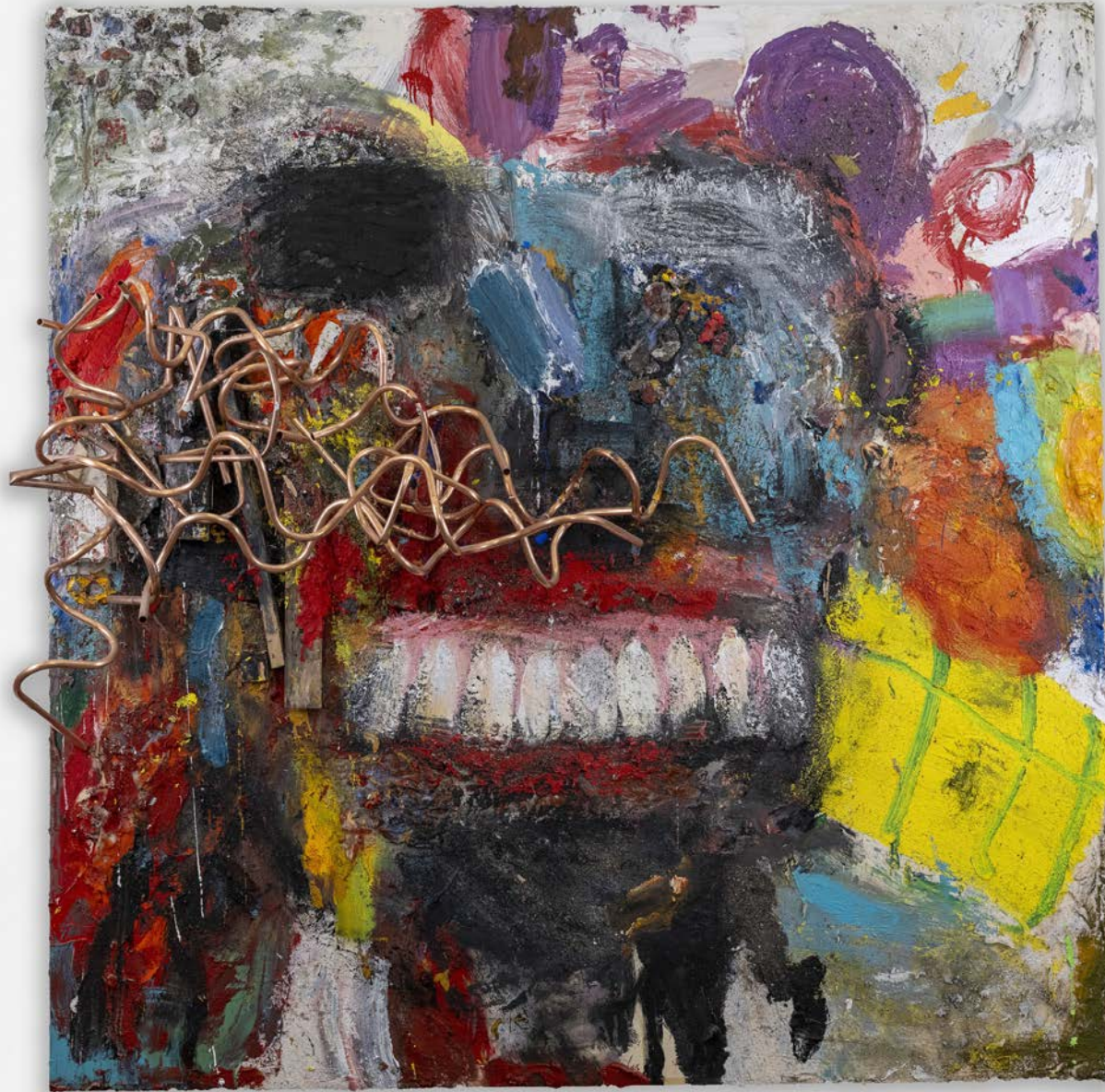
Edition of 3



Blue Ohio, 2023
Copper tubing, acrylic and objects on wood panel
220 × 215 cm
87 × 85 1/2 in.



The Landscape Eunice Made, 2023
Acrylic, copper piping and objects on wood panel
220 × 215 cm
87 × 85 1/2 in.



My Angel in Bardo, 2023
Acrylic and objects on wood panel
220 x 215 cm
87 x 87 1/2 in.

Fragile Landscape With Shadows, 2024
Acrylic and objects on four panels
200 × 200 cm — 78 3/4 × 78 3/4 in. (each panel)
400 × 400 cm — 157 1/2 × 157 1/2 in. (in total)





The Waltz (Grunewald), 2023

Acrylic and objects on three wood panels

163 × 197 cm — 64 1/4 × 77 1/2 in. (left panel)

140 × 400 cm — 55 × 157 1/2 in. (center panel)

163 × 200 cm — 64 1/4 × 78 3/4 in. (right panel)

220 × 400 cm — 86 1/2 × 157 1/2 in. (in total)



Clouds over Paris, 2023

Acrylic and objects on three wood panels

224 x 139 cm — 88 1/2 x 60 3/4 in. (each panel)

224 x 417 cm — 92 1/4 x 176 x 18 1/2 in. (in total)



Dry Ridge Portrait, 2023
Acrylic and objects on wood panel
221 × 217 cm
87 × 85 1/2 in.

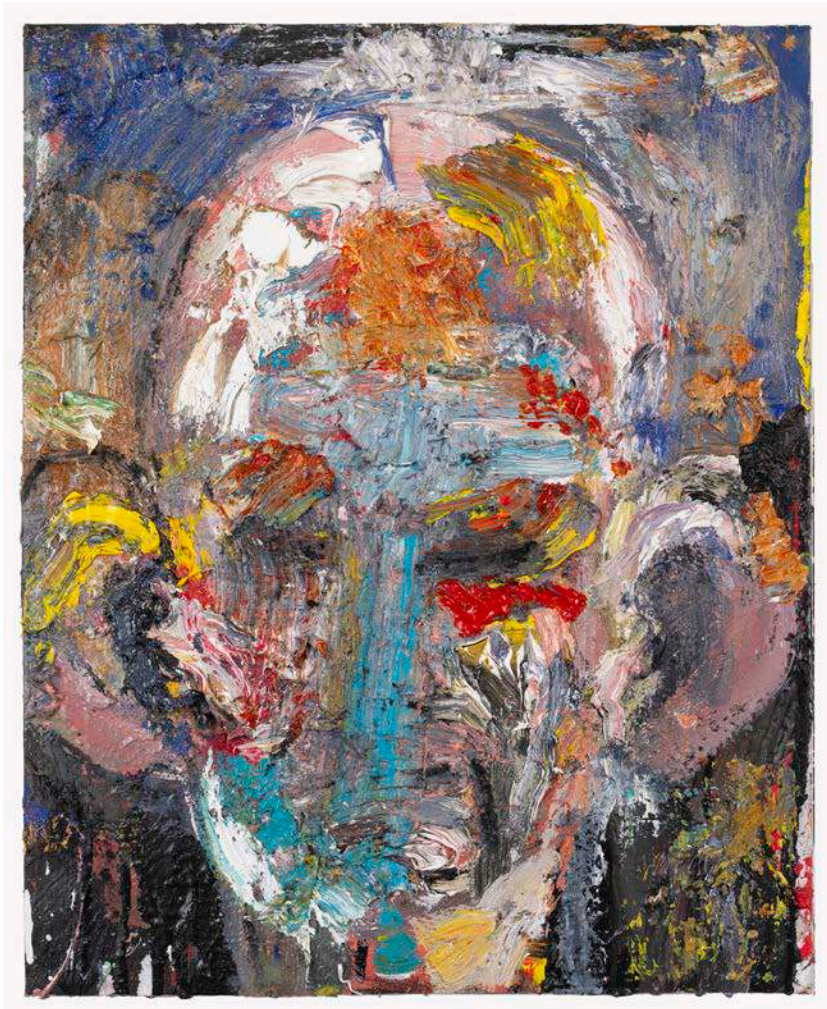
Cry, The Poem, 2023

Unique polymer resin with paint and objects
with audio of Jim Dine reading his poem "Dog on the Forge"
200 x 100 cm (each vase)
220 x 200 x 100 cm - 78 3/4 x 78 3/4 x 39 1/4 in. (in total)
Unique

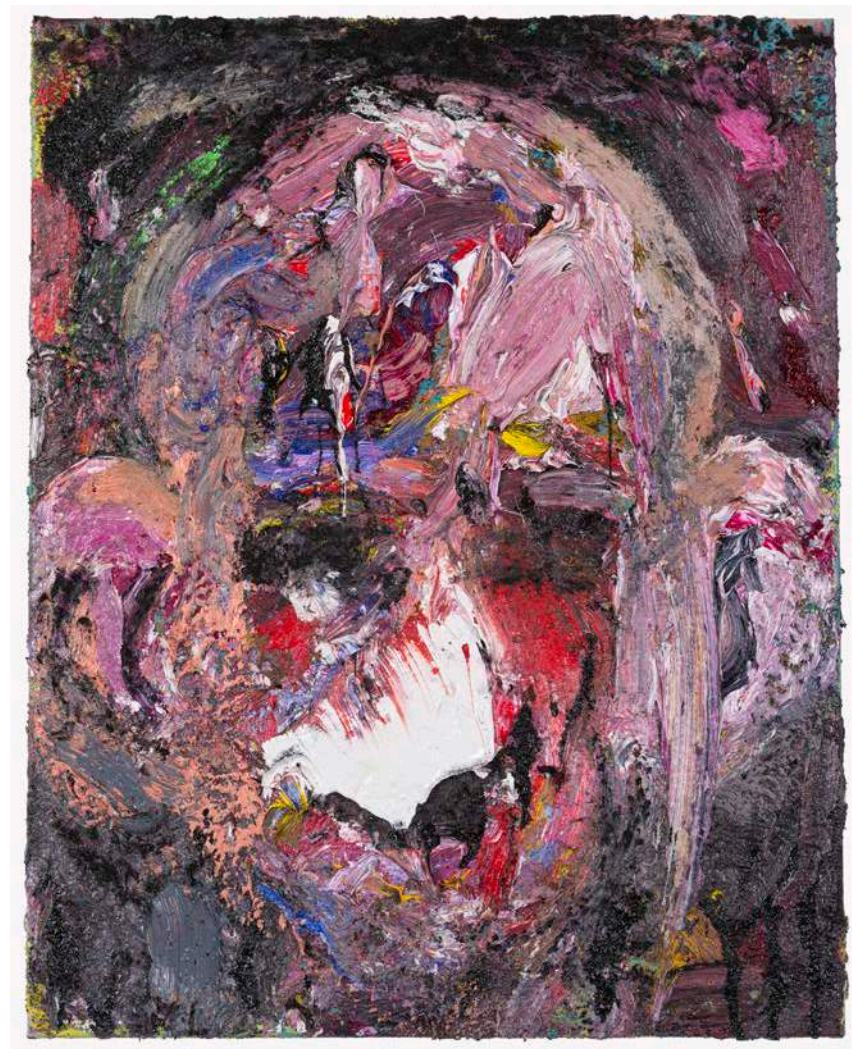




Ape & Cat (a Still Life), 1993
Painted and patinated bronze
41,5 x 49,5 x 43 cm
16 1/4 x 19 1/2 x 17 in.
Unique



Me #8, 2020
Oil on panel
50 x 40 cm
19 5/8 x 15 3/4 in.



Me #9, 2020
Oil on panel
50 x 40 cm
19 5/8 x 15 3/4 in.

ABOUT JIM DINE

Born in 1935, Jim Dine grew up in Cincinnati, Ohio and started his career in the late 1950s in New York with a series of happenings that attracted great attention. In the 1960s, he exhibited his assemblages and first paintings alongside the new generation of pop artists, from Claes Oldenburg to Tom Wesselmann.

Jim Dine has spent the last 60 years traveling the world, sharing his time between various foundries, studios and print workshops, from Göttingen, Germany to New York and Walla-Walla in the U.S. to Saint Gallen, Switzerland. Over the last 50 years, poetry has been at the core of his practice, and he regularly gives readings and performances of his poems.

Jim Dine's work is featured in over 70 public collections across the world, including the Metropolitan Museum of Art in New York, MoMa, Guggenheim, Albertina Museum in Vienna, Folkwang Museum in Essen, Centre Pompidou, Paris, The British Museum and Tate Britain in London.

His work has been presented in solo exhibitions around the world including the Stedelijk Museum, Amsterdam, Netherlands (1967), The Museum of Modern Art, New York, USA (1967 and 1978), the Palais des Beaux-Arts - Bozar in Brussels, Belgium (1970), La Jolla Museum of Contemporary Art, La Jolla, California, USA (1974), The Contemporary Arts Center, Cincinnati, Ohio, USA (1988), the Setan Museum of Art & Museum of Art Tokyo & Osaka, Japan (1990), the Borås Konstmuseum Sweden, Switzerland (1993), the J. Paul Getty Museum, the Getty Villa, Malibu, California, USA (2008), The McNay Art Museum, San Antonio, USA (2009), the Paul Petro Contemporary Art, Toronto, Canada (2010), the Albertina Museum, Vienna, Austria (2016), the Antiken Museum, Basel, Switzerland (2016), the Accademia di San Luca, Rome, Italy (2017), the Centre Pompidou, Paris, France (2018), the Multimedia Art Museum, Moscow, Russia (2018), the Palazzo delle Esposizioni, Rome, Italy (2020), and The Israel Museum, Jerusalem, Israel (2020).

In 2023, Jim Dine inaugurated The Stardust House in Göttingen, Germany, a pavilion dedicated to the sculpture, Thru the stardust, the heat on the lawn. This exhibition was followed in June by the exhibition Storm of Memory at the Kunsthaus Göttingen, debuting new sculptures, drawings, prints and books. That same year, Dine also participated in the exhibition, Paravents at the Prada Foundation, as he inaugurated an exhibition of 74 portrait drawings donated to Bowdoin College, Maine, USA.



ABOUT GERHARD STEIDL

Gerhard Steidl is a German printer and publisher. He was born in 1950 in Göttingen, Germany. Steidl developed an interest in the technical aspects of printing from an early age and his impetus for a career in printing came when, as a teenager, one of his photographs was used in a poster advertising a production of Brecht's *Mann ist Mann*.

In the late 1960s, Steidl established Steidl Verlag in Göttingen. Gerhard Steidl, together with Klaus Staeck worked very closely with Joseph Beuys until his death in 1986. At this point Steidl began to concentrate on publishing photography books. In 1993 he won the Lucky Strike award. He published Karl Lagerfeld and began a 26 yearlong collaboration. In 1998 Steidl met Jim Dine in Paris and since have collaborated on over 30 book projects, ranging from conceptual books like, *The Goofy Life of Constant Mourning & Viral Interest*, to his latest catalog raisonné of prints, *I Print 2000-2020*, and recently, *Three Ships*, which accompanied his exhibition by the same name last September at TEMPLON New York.

The relationship between Gerhard Steidl and Jim Dine has also given birth to dedicated pavilions in Göttingen, Germany; *House of Words* and *Stardust House*. These two monumental groups of sculpture combine the many facets of Dine's oeuvre and Steidl's acute sense of architecture and scenography, bringing together poetry and large-scale ceramic pots with bronze appliqué. In 2020, Gerhard Steidl received the Gutenberg Prize of the International Gutenberg Society and the City of Mainz. Then in 2021, Steidl inaugurated a thirty-year-old dream of opening a *Kunsthaus* in Göttingen. As its Founding Director, Steidl has curated exhibitions of Roni Horn, William Kentridge, *Documenta 17* and Jim Dine's *Storm of Memory*. It is for this reason that *Kunsthaus Göttingen* and Gerhard Steidl were a natural choice to organize *Dog on the Forge*, the latest opus by Jim Dine, curated by Gerhard Steidl.



EXHIBITION DETAILS

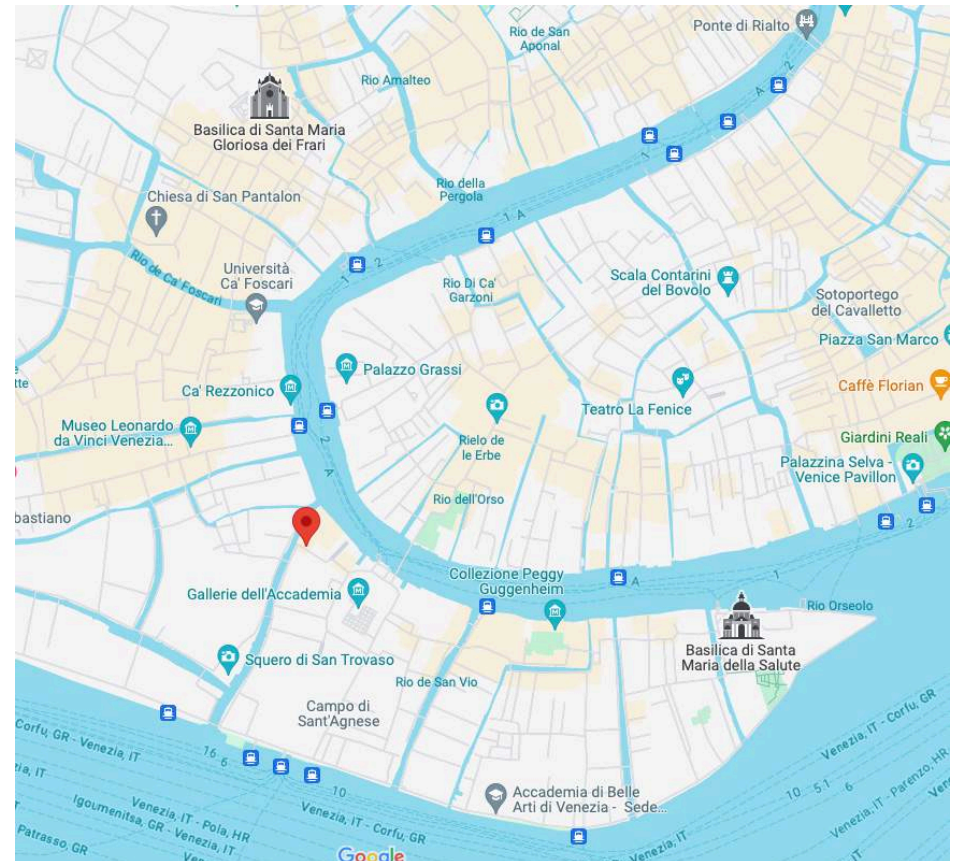
Palazzo Rocca
Contarini Corfù

Sestiere Dorsoduro, 1057/D, 30123 Venezia
Vaporetto stop: Accademia

Dates:
20 April 2024 – 21 July 2024

Hours:
Tuesday – Sunday
10:00 AM – 6:00 PM

FREE Admission



RAGE, SHOT THRU THE

MAKES IT UNPRINTABLE,

THE SLEEPER WILL ALWAYS DREAM

ABOUT DEMOCRACY - A HO

THE DOG ON THE FORGE

POISONED BY THE DARK AMBE

OTOS ON THURSDAY, NEXT TUESDAY, WE

OFFEE, DOZEN EGGS, ORANGES, ETCETERA. GREEK

MILK LATER AND SEE